

The Classroom of the Future 2025

Virtual, Secure, and Data Driven

Wolters Kluwer and the National League for Nursing (NLN) jointly conducted the Future of Technology in Nursing Education survey. The survey was undertaken in late 2020 to understand the shifts in technology adoption

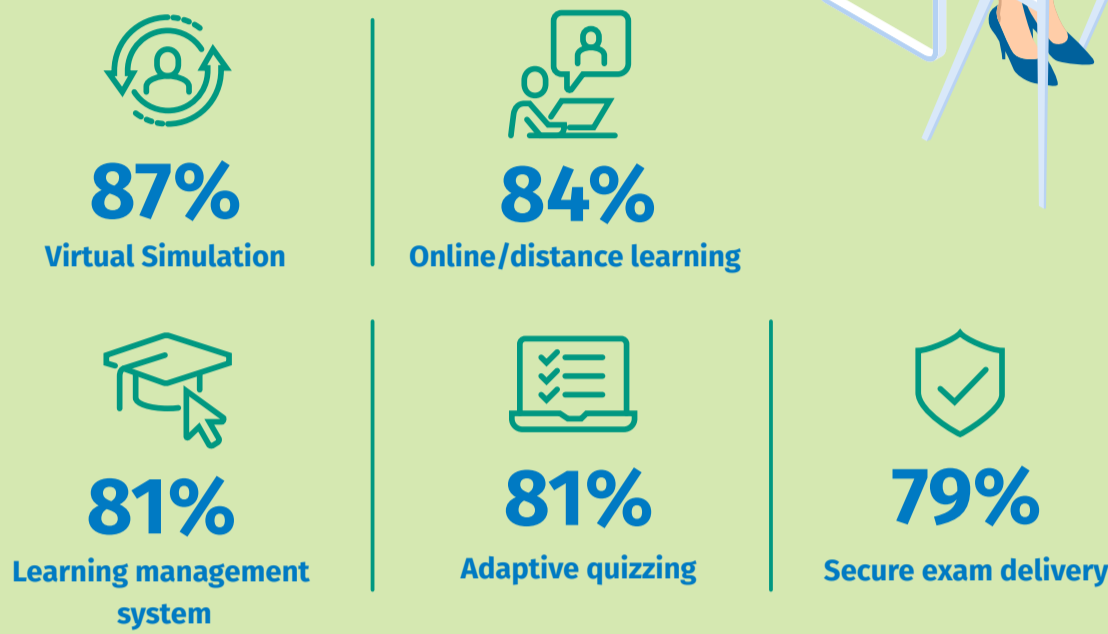
related specifically to the COVID-19 global pandemic through 2025.

Deans and faculty were surveyed to learn their plans for technology investment during the next 5 years and explore the barriers and opportunities related to those investments.

Full Tech Adoption by 2025

The classroom of the future is likely to be a hybrid environment with institutions leveraging emerging technologies like Artificial Intelligence and augmented reality, while fully adopting virtual simulation and distance learning, among others.

Anticipated adoption of technologies by nurse educators in the next 4 to 5 years

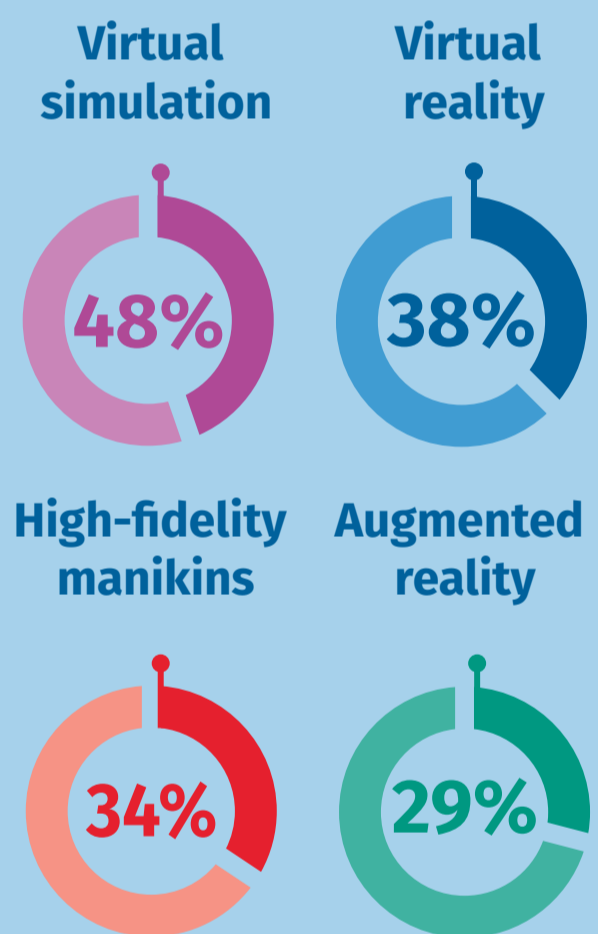


Fewer Clinical Sites, More Simulation

Just as clinical sites have seen a decline, there has been an increase in virtual simulation, which delivers realistic patient encounters. Respondents expect to invest more funding across a range of virtual technologies.



Investing More



“...In simulation, students get to go ahead make the mistake, and then they get to understand what the mistake causes; that imprints in a very different way to help them understand the consequences and not make that mistake again.”

Desiree Hensel, PhD,
Dean of Curry College School of Nursing

On the Horizon: 5 Technologies Going Mainstream by 2025

Technologies empower nursing students with skills and competences to adapt to a constantly changing healthcare landscape. Emerging technologies build skills such as clinical judgment, problem solving, innovation, digital literacy, and adaptability. Educators anticipate that more than 50% of programs will be using these technologies by 2025.



+39%
Virtual reality

+35%
ePortfolio

+33%
Mobile apps

+32%
Video capture software

+16%
Integrated digital curriculum

Full technology adoption = >75%

Mainstream adoption = <50% to >50%