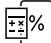





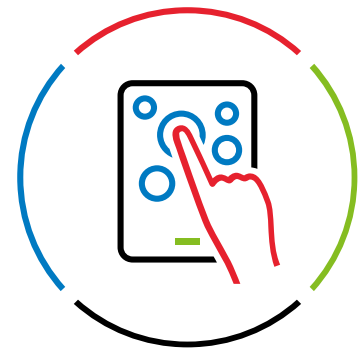


We'll take real property recordings off your hands

Shortage of experienced staff coupled with working remotely and the need to reduce costs and turnaround times are leading lenders and servicers to look for a better recording solution. iLienRED®, Wolters Kluwer's automated, web-based platform for completing, recording, and tracking mortgage-related documents, helps ensure critical jurisdictional requirements are met and provides an efficient, cost-effective, and stress-free solution for these needs.

What lenders tell us	What we deliver
"Manual recording is inefficient . It can take months to get recording information back from the county."	 Electronic recording reduces costs and speeds up turnaround time to hours or days ; available for virtually any mortgage-related document
"We spend a lot of time and money on printing and shipping paper documents."	 Use electronic signature and notarization; Lien Solutions can also sign on your behalf, handling the entire process from signing to recording
"Sending borrower notification letters with recorded documents is an extra, tedious task ."	 Lien Solutions can send a customized letter with the recorded document to your borrower, with a copy in your activity log
"Jurisdictions are constantly changing their requirements."	 We work with 3,600+ jurisdictions nationwide, ensuring accurate, up-to-date county rules and templates
"Our manual system for tracking orders and creating an audit trail is time-consuming and risky ."	 Speed up daily tasks and audits with custom reporting, a log of every activity on your order, recorded images, and auto-compliance calculations
" Not all counties accept electronic recording ... we'd still have to have a manual system for paper."	 One web-based system that handles electronic recording, eSignature, and paper-based recording — including courier service
"We've customized our templates; will we lose all that work? "	 iLienRED provides county-specific templates and rules , or you can also use your own templates and rules



For more information, visit www.wolterskluwer.com or contact us at (800) 833-5778 x 3

Over 2,400 lenders trust Wolters Kluwer's [mortgage portfolio](#) of technology, content, and advisory services. At Wolters Kluwer, our compliance-first approach to problem-solving provides clients of all sizes with solutions that simplify and accelerate mortgage lending, from origination to monetization and portfolio analytics. Our proven digital mortgage technology enables clients to unleash their eMortgage potential to drive adoption with ease and certainty.