

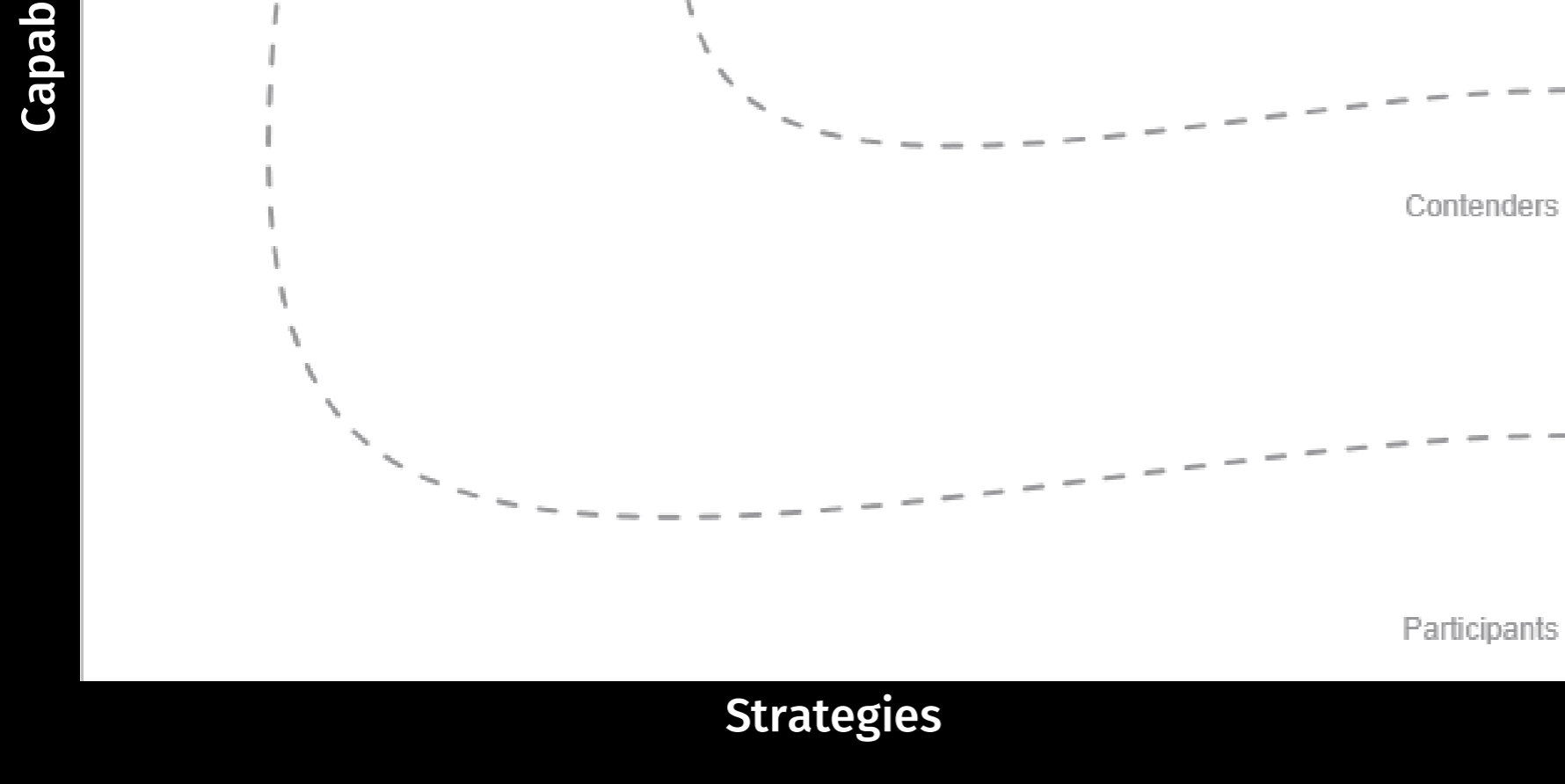
Seamless scalability. Unlimited potential.

ELM Solutions provides corporate legal and claims departments with a single source of truth to align data-driven decisions with broader business goals. Our integrated legal technology ecosystem accelerates savings, compliance, and efficiencies so you can not only address today's challenges but also transform them into opportunities to excel in the future.

Tackle challenges without limitations

Market-leading spend and matter management platforms work seamlessly with a portfolio of advanced technology solutions and powerful analytics. They're designed to meet you where you are on your path to digital transformation and scale with your evolution to a value-driven legal organization.

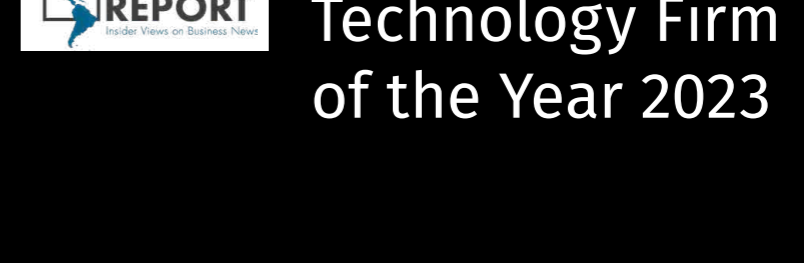
IDC MarketScape Worldwide Enterprise Legal Management Software Vendor Assessment*



*IDC, 2023

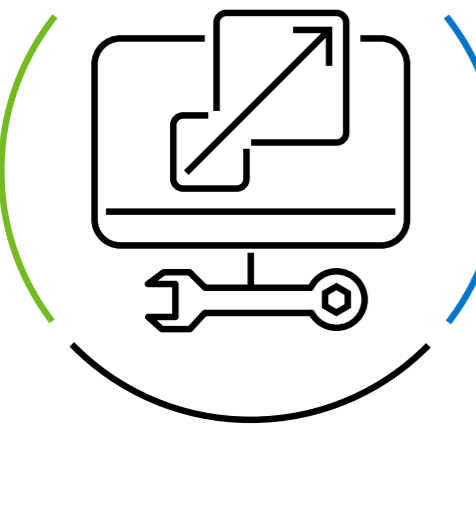
We hold a strong reputation in the industry, and we don't take it lightly. It was earned by focusing on the critical needs of our clients to deliver measurable outcomes.

- ✓ Innovative technology
- ✓ Deep domain and data expertise
- ✓ Unparalleled support
- ✓ Proven results



Innovative technology

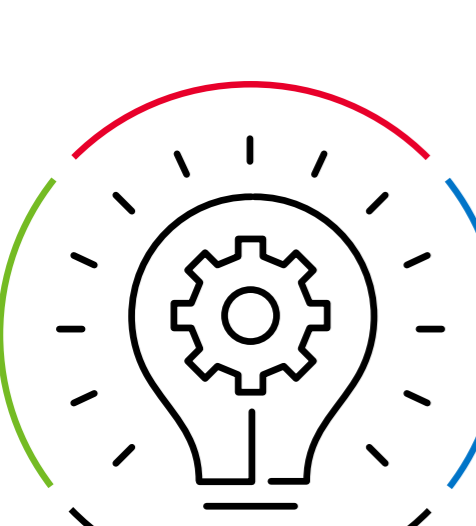
Flexibility to meet and scale with the most complex requirements



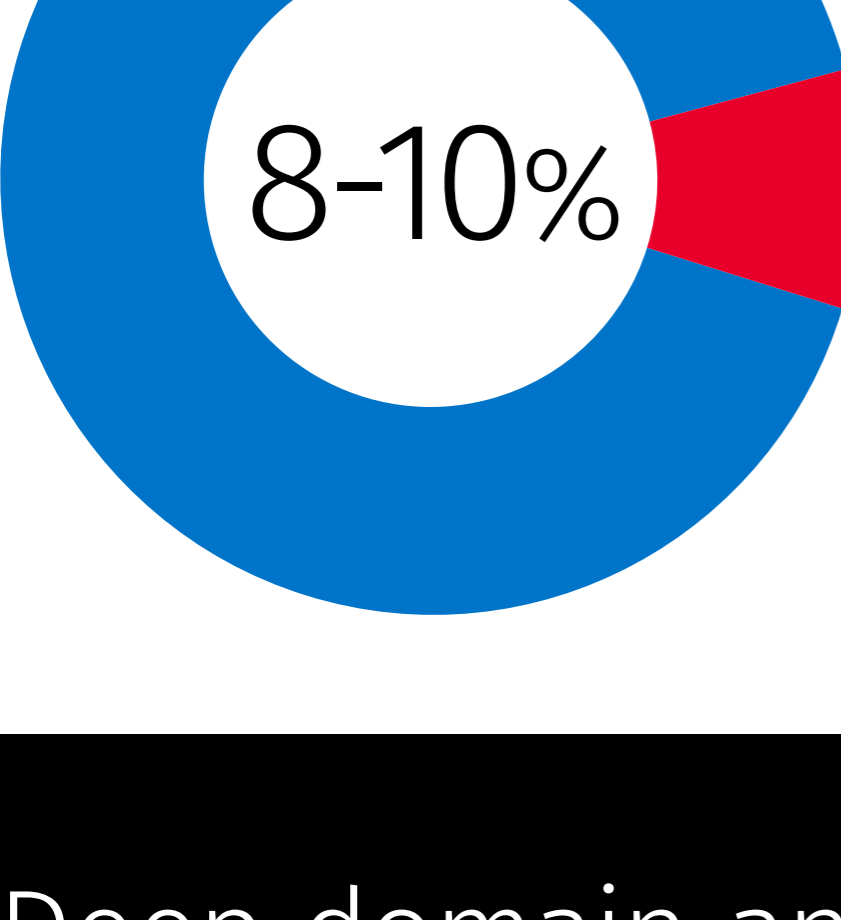
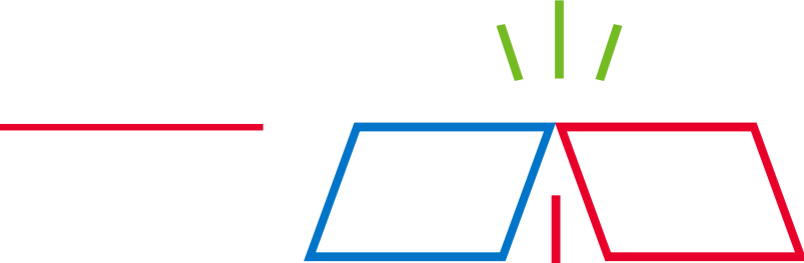
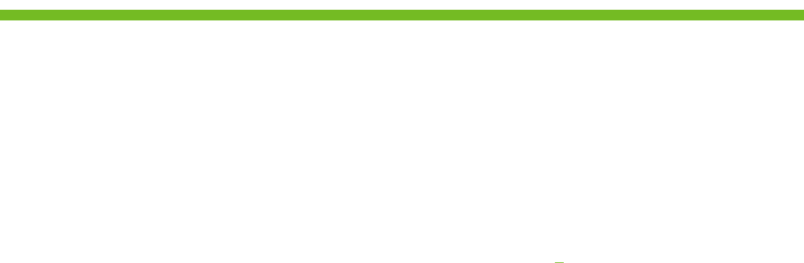
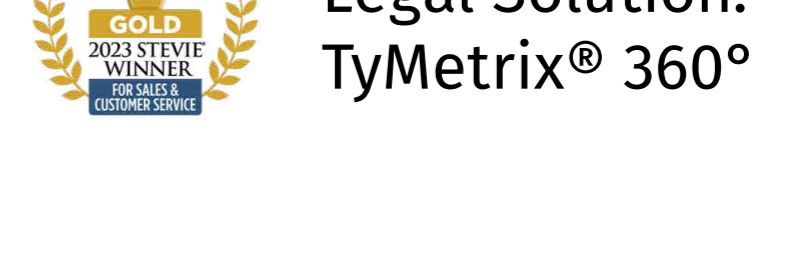
Scalable, configurable spend and matter management
Enable intuitive, efficient workflows to deliver maximum visibility and productivity for improved decision-making and cost predictability



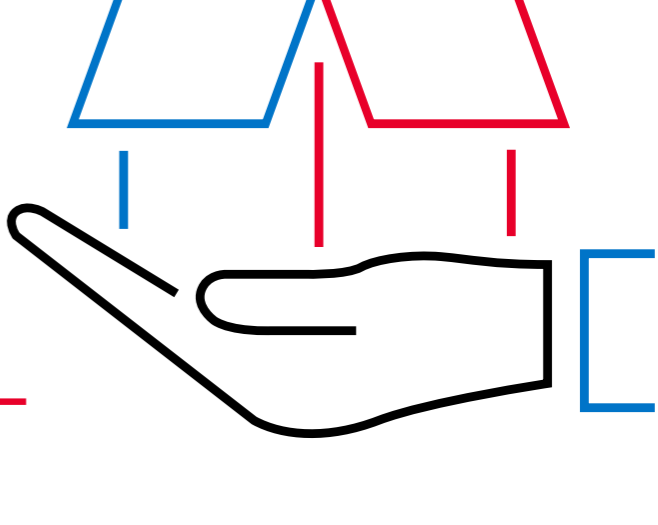
Market-leading AI-powered solutions
Harness the power of AI and legal experts to make your team more effective and efficient



Innovation-ready, modern cloud
Depend on a secure platform, prepared to support the innovation and scale necessary to deliver the future of legal technology solutions



8-10% of revenue is consistently invested in new and enhanced products.

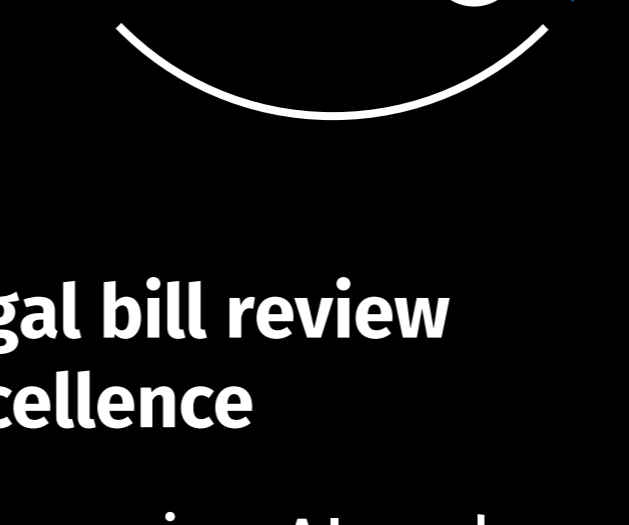


Deep domain and data expertise

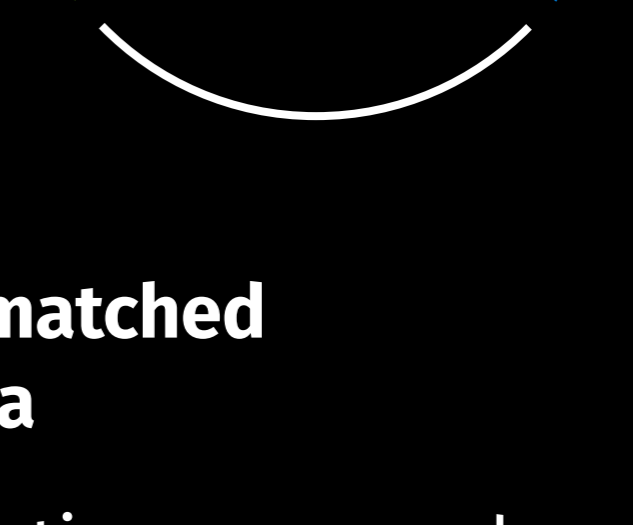
A tailored approach to applying operational best practices and supporting organizational change



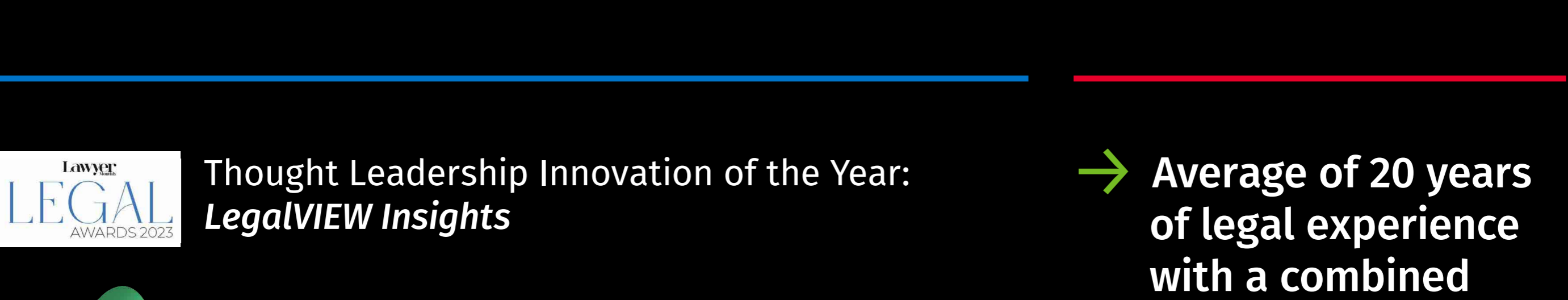
Leaders in change management
Partnering with clients, their law firms, and end users to apply best practices, streamline how work gets done, and help teams learn and adopt new ways of operating for sustainable change



Legal bill review excellence
Leveraging AI and machine learning, combined with legal ops experts and data scientists, for a consultative approach to quickly, securely, and accurately identify and resolve billing issues



Unmatched data
Solutions powered by \$160B+ in actual legal spend data for valuable insights into billing practices and performance metrics



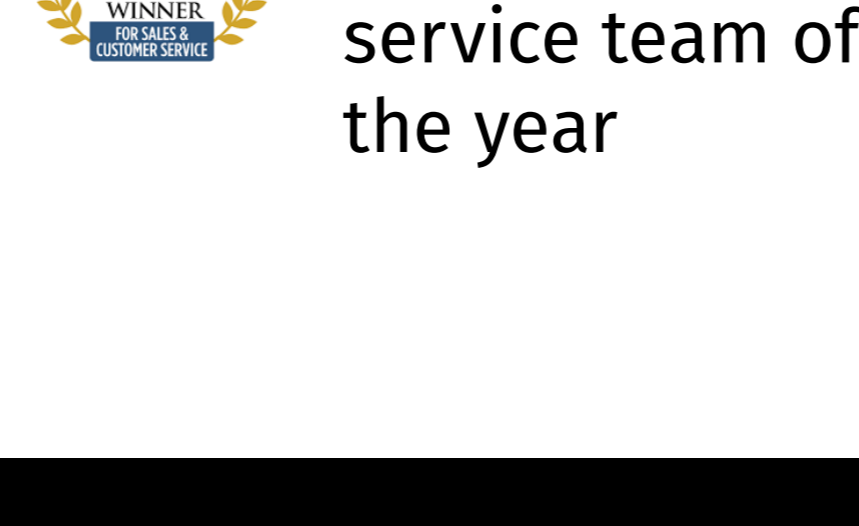
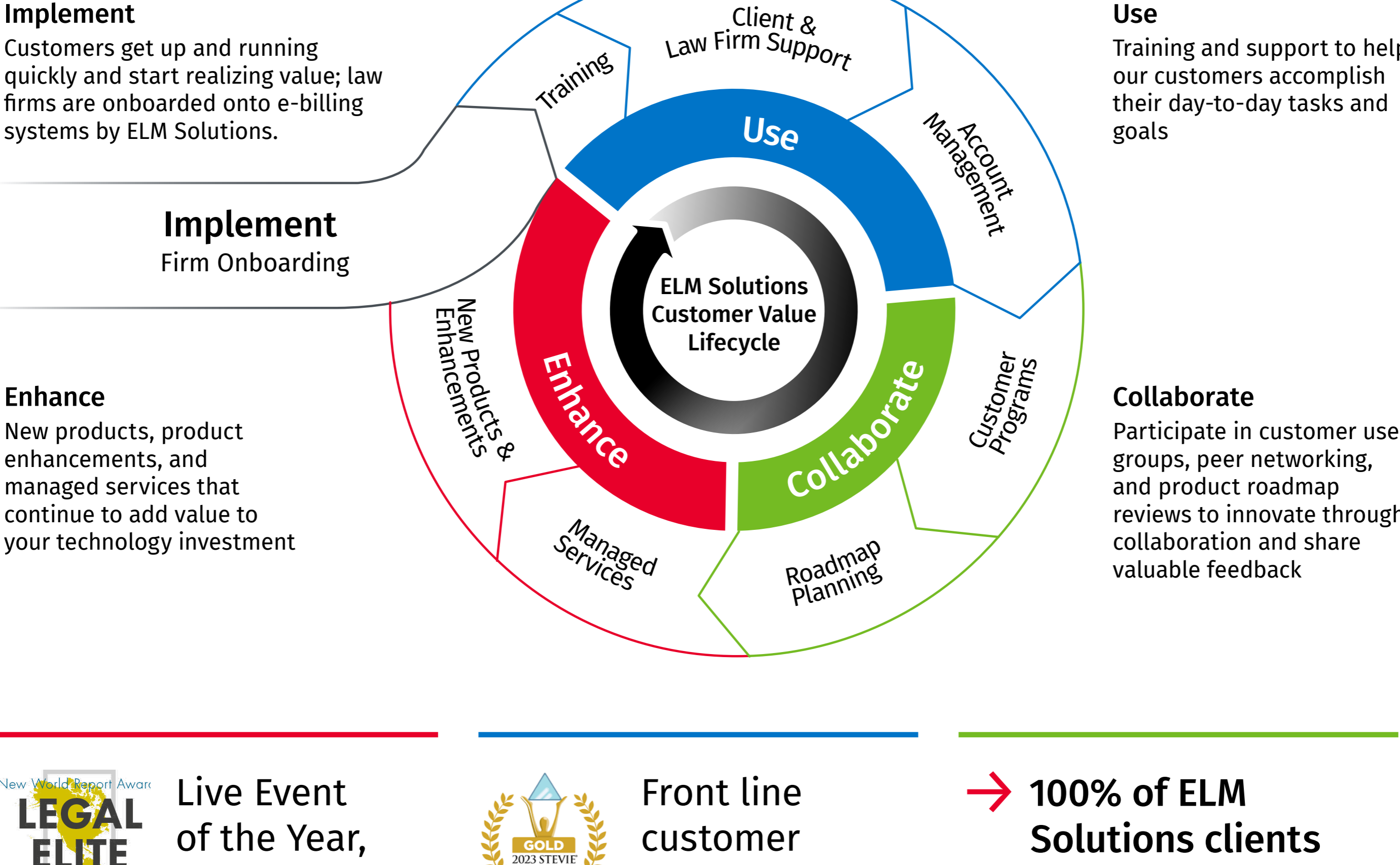
→ Average of 20 years of legal experience with a combined total experience of 250 years in expert legal bill review operations leadership

Unparalleled support

An unrelenting focus on exceptional customer experiences

ELM Solutions' customer value lifecycle

Designed to ensure our customers realize the full value of their investment



→ 100% of ELM Solutions clients have direct account management coverage.

Proven results

Measurable impacts keep our clients on the leading edge of legal transformation.

- \$1.5 million year-one savings from line-item adjustments
- 25% reduction in overall outside counsel spend within 12 months
- 100% vendor compliance with engagement letter execution and provision of diversity data
- 30% of spend with diverse timekeepers
- A single-solution matter intake process that consolidates reporting and reduces staff time
- Outlook integration that supports easy association of emails with billing matters and lays the groundwork for more sophisticated document management
- Automated accruals and payment processing file creation, which saves two FTEs one workweek monthly

"We've created a holistic spend and matter management system that all works together and allows us to pull data and reporting in a way that we never could before. And we're really excited about it."
-- Director of Legal Operations, Adtalem Global Education

A leading financial services organization partners with ELM Solutions to execute on a legal technology roadmap designed for modernization, innovation, and efficiency.

- | | |
|--|--|
| <p>Efficiency improvements</p> <ul style="list-style-type: none"> → 50% reduction in matter entry and set up time → 50% reduction in outside counsel onboarding time → Reduction of 10,000+ manual hours | <p>LegalVIEW BillAnalyzer results</p> <ul style="list-style-type: none"> → 8% reduction in outside counsel expenses → 25% reduction in invoice review time (\$5k+ invoices) → 100% reduction in invoice review time for invoices less than \$5k → 5% quick pay discount ensured due to 20% increase in speed to payment |
|--|--|

"The ability to be innovative, adaptable, and flexible allowed us to get as much done as possible, regardless of the challenges."
-- Head of Legal Operations, Leading financial services organization

Are you ready to...

- Navigate change**
- Drive productivity and efficiency**
- Improve spend management**
- Enable data-driven insights and decisions**

Learn more

Learn more about how Wolters Kluwer ELM Solutions prepares your legal team with the necessary tools to address the external pressures facing businesses today.

Call: +1 800 780 3681
Email: elmsolutionssales@wolterskluwer.com
www.wolterskluwer.com